

Hydro Profile



Light Efficiency:



Light Quality:



Color Temperature:



Output: 15763 lm

Peak: 279131 cd

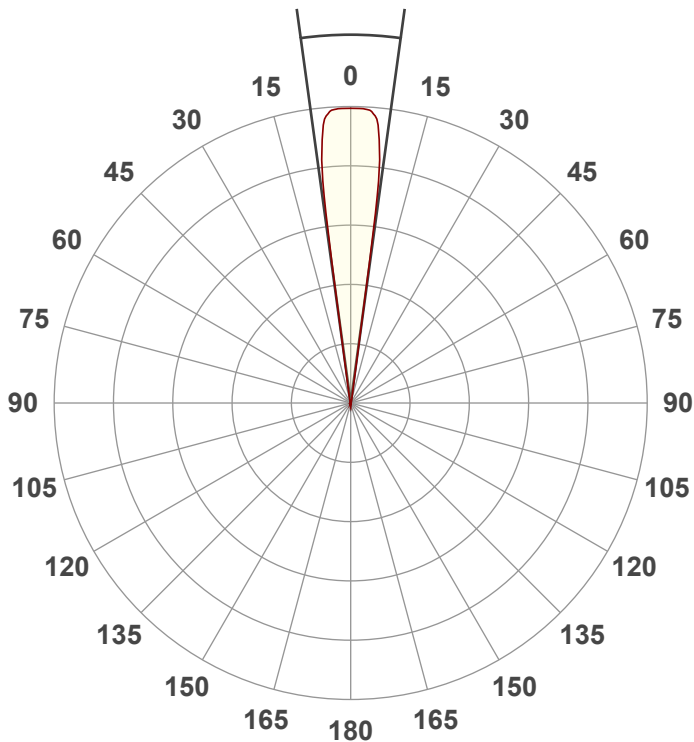
Power: 865 W

PF: 1.0



Beam Angle

15.6°



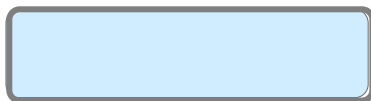
Test:

Zoom 50% High CRI

Date:

7/19/2022

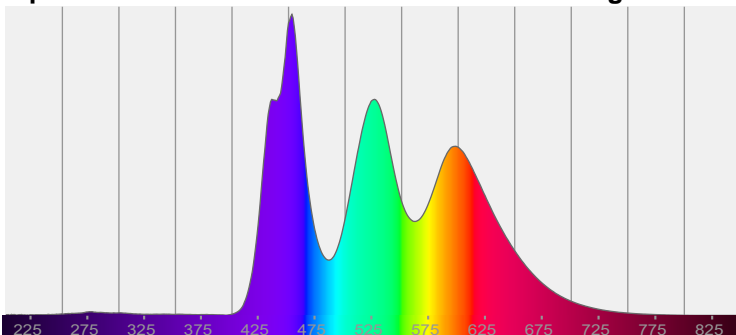
Note:



CIE 1931
x: 0.306
y: 0.309

Spectra

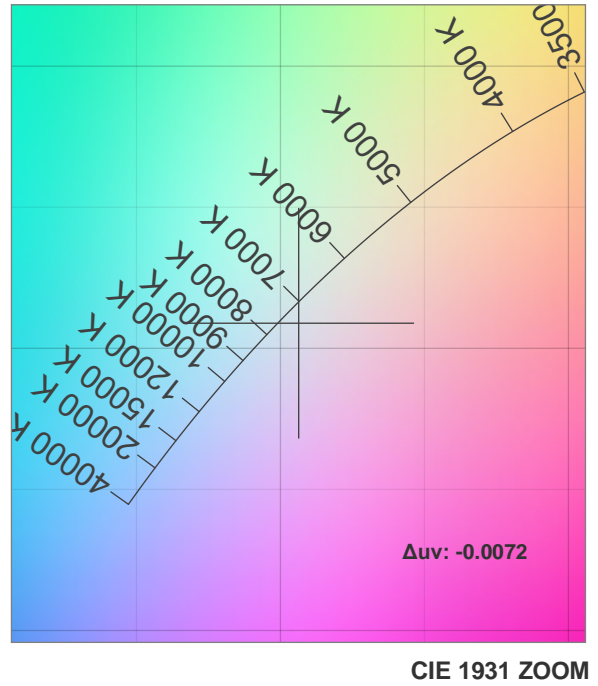
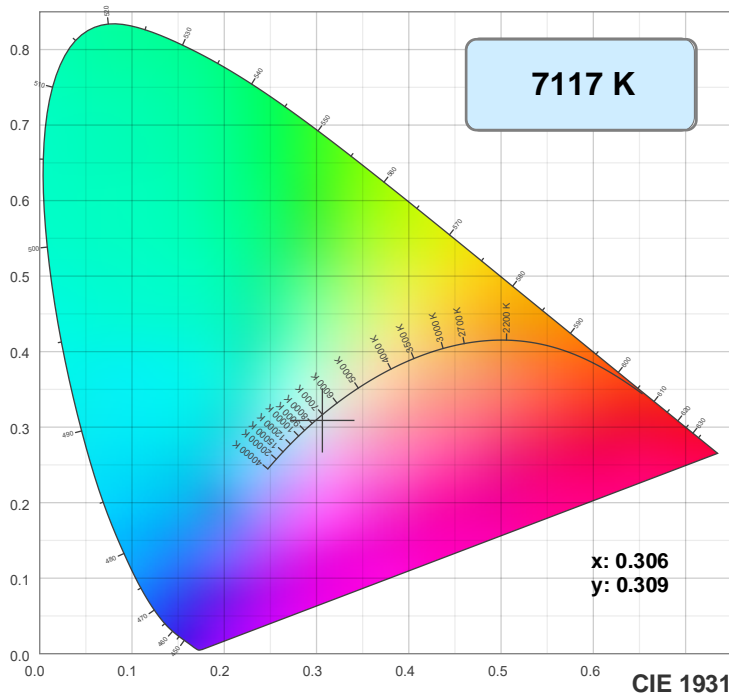
Dominant Wavelength: 360nm



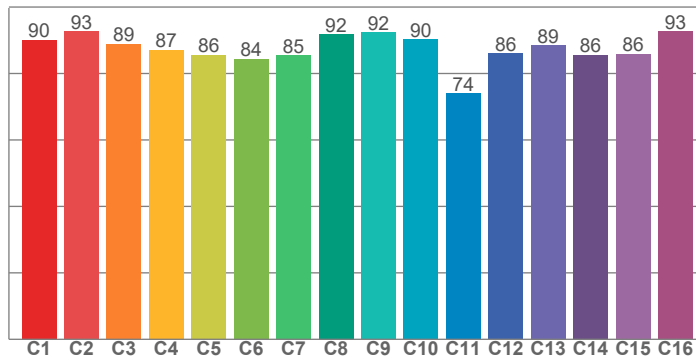
Power

Voltage: 117 V
Current: 7.39 A
Frequency: 0 Hz

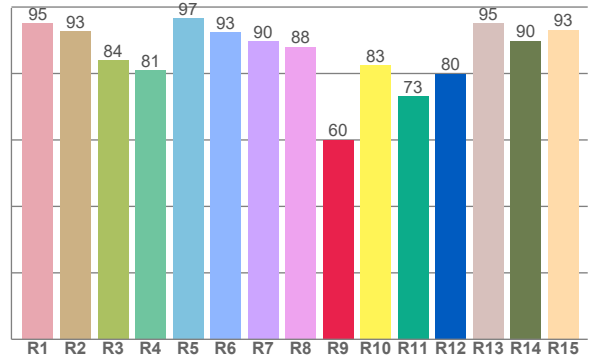
Color Details



TM30: 87.7



CRI: 89.9 (R1-R8)



CRI R values, only R1-R8 are used to calculate final CRI value

R1	R2	R3	R4	R5	R6	R7	R8	R9	R10	R11	R12	R13	R14	R15
95.1	92.8	83.9	80.9	96.6	92.5	89.6	88.0	60.1	82.5	73.2	79.9	95.2	89.9	93.2

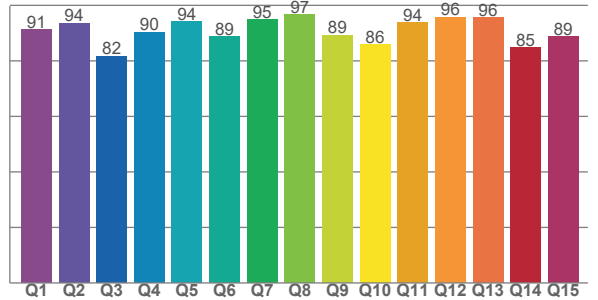
TM30 C values, 16 binned values out of total of 99 C values

C1	C2	C3	C4	C5	C6	C7	C8	C9	C10	C11	C12	C13	C14	C15	C16
90.1	92.7	88.9	87.1	85.5	84.4	85.5	91.8	92.3	90.2	74.0	86.0	88.5	85.6	85.9	92.6

CQS Q values

Q1	Q2	Q3	Q4	Q5	Q6	Q7	Q8	Q9	Q10	Q11	Q12	Q13	Q14	Q15
91.2	93.6	81.6	90.3	94.1	88.7	94.9	96.7	89.3	85.7	93.7	95.8	95.7	84.8	88.7

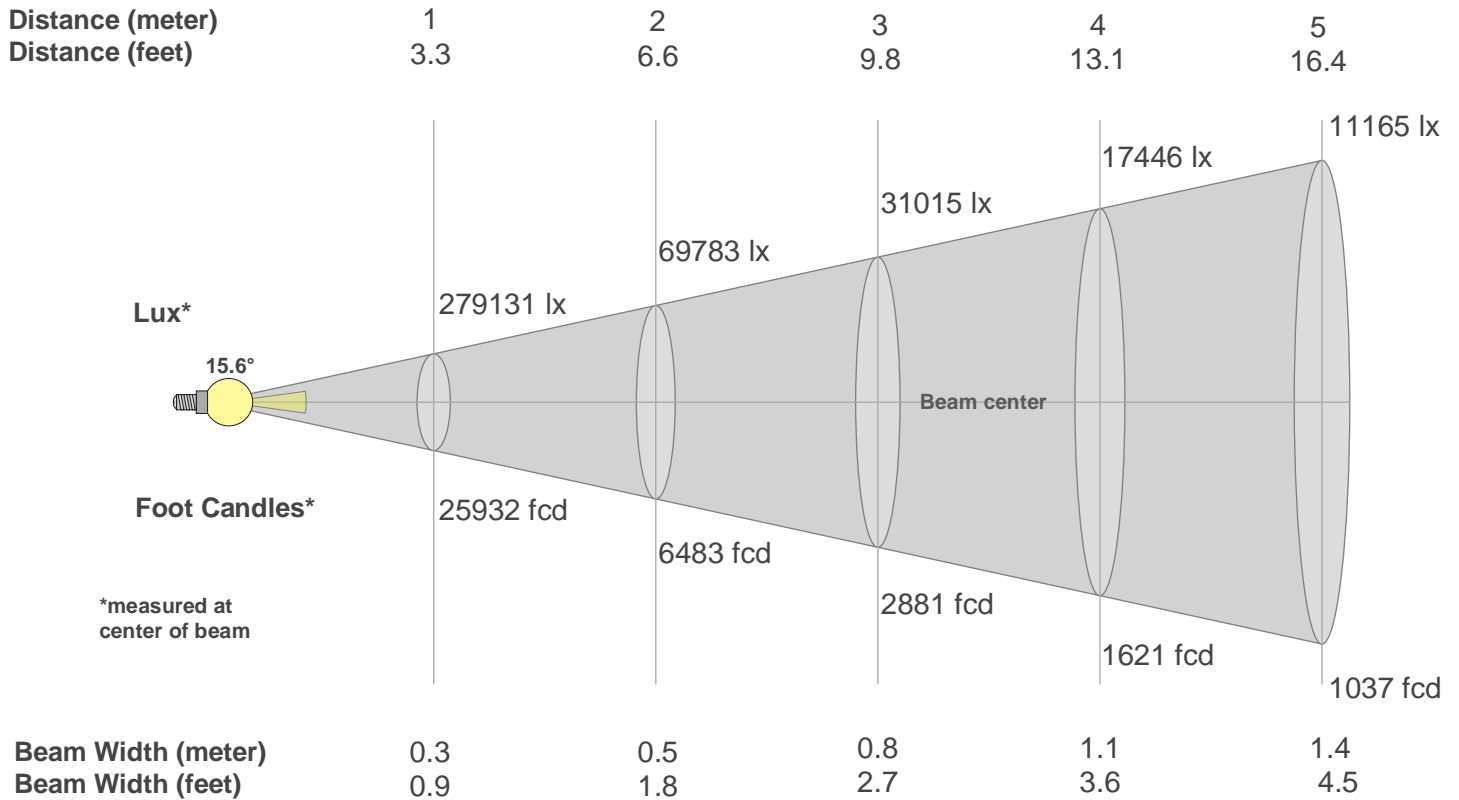
CQS: 90.0



Color Parameters

Color Temperature	Color Rendering Index	Red Component	Color Fidelity	Color Gamut	Color Quality Scale	Color Coordinate CIE 1931	Color Coordinate CIE 1931	Color Coordinate	Color Coordinate	Color Deviation from Black Body
CCT	CRI	CRI R9	TM30 Rf	TM30 Rg	CQS	x	y	u	v	Δuv
7117 K	89.9	60.1	87.7	106.0	90.0	0.306	0.309	0.201	0.304	-0.0072

Beam Details



Beam Intensities from 1-20m

m	1	2	3	4	5	6	7	8	9	10	11	12	13	14	15	16	17	18	19	20
ft	3.3	6.6	9.8	13.1	16.4	19.7	23	26.2	29.5	32.8	36.1	39.4	42.7	45.9	49.2	52.5	55.8	59.1	62.3	65.6
lx	279131	69783	31015	17446	11165	7754	5697	4361	3446	2791	2307	1938	1652	1424	1241	1090	966	862	773	698
fcd	25932.1	6483	2881.3	1620.8	1037.3	720.3	529.2	405.2	320.1	259.3	214.3	180.1	153.4	132.3	115.3	101.3	89.7	80	71.8	64.8

Intensities in 0° C-plane

0°	1°	2°	3°	4°	5°	6°	7°	8°	9°	10°	11°	12°	13°	14°	15°	16°	17°	18°	19°
279K	279K	279K	278K	276K	269K	252K	210K	116K	18K	4K	0K	0K	0K	0K	0K	0K	0K	0K	0K
100%	100%	100%	100%	99%	96%	90%	75%	41%	6%	2%	0%	0%	0%	0%	0%	0%	0%	0%	0%

Intensities in 90° C-plane

0°	1°	2°	3°	4°	5°	6°	7°	8°	9°	10°	11°	12°	13°	14°	15°	16°	17°	18°	19°
279K	279K	279K	278K	276K	269K	252K	210K	116K	18K	4K	0K	0K	0K	0K	0K	0K	0K	0K	0K
100%	100%	100%	100%	99%	96%	90%	75%	41%	6%	2%	0%	0%	0%	0%	0%	0%	0%	0%	0%

Intensities in 180° C-plane

0°	1°	2°	3°	4°	5°	6°	7°	8°	9°	10°	11°	12°	13°	14°	15°	16°	17°	18°	19°
279K	279K	279K	278K	276K	269K	252K	210K	116K	18K	4K	0K	0K	0K	0K	0K	0K	0K	0K	0K
100%	100%	100%	100%	99%	96%	90%	75%	41%	6%	2%	0%	0%	0%	0%	0%	0%	0%	0%	0%

Intensities in 270° C-plane

0°	1°	2°	3°	4°	5°	6°	7°	8°	9°	10°	11°	12°	13°	14°	15°	16°	17°	18°	19°
279K	279K	279K	278K	276K	269K	252K	210K	116K	18K	4K	0K	0K	0K	0K	0K	0K	0K	0K	0K
100%	100%	100%	100%	99%	96%	90%	75%	41%	6%	2%	0%	0%	0%	0%	0%	0%	0%	0%	0%

Beam Angle 50%	Field Angle 10%	Cutoff Angle 2,5%	Intensity Ratio in 120° Cone	Intensity Ratio in 90° Cone
15.6°	17.5°	19.6°	100.0%	100.0%